

displayfactory



promotion systems

xtension.

The lighter and easier to set up fabric pop-up stand

xtension. the all new pop-up stand that offers ultra-quick set-up



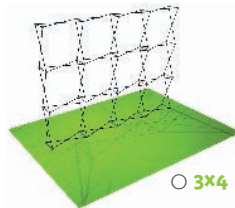
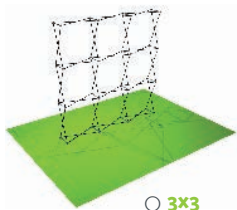
The portable booth features a fabric graphic that remains attached to the structure and unfolds up to widths of 16.4 ft.



5 great reasons to choose the **xtension.** booth

- 1. Fast and easy to set up:** Its system of magnetic connectors and a graphic that attaches with Velcro allow you to set up and dismantle the structure in less than 30 seconds.
- 2. Aesthetically-pleasing:** Offers a large, seamless image with a tight and wrinkle-free graphic.
- 3. Practical:** The graphic remains attached to the structure, which allows for very easy and compact storage.
- 4. Lightweight and compact:** The aluminum structure and printed graphics make the solution lightweight and easy to transport (weighs less than 11 lbs, excluding the carrying case).
- 5. Durable and Versatile:** The solution is easily adaptable to your ever-changing communication needs. The graphics are easily interchangeable and the structure comes with a lifetime guarantee against manufacturer's defects.

Choose the **xtension.** best suited to your needs



Four standard configurations

xtension.3x1 H 2240 mm × L 770 mm × P 340 mm (89" × 31" × 13.39")

xtension.3x2 H 2240 mm × L 1510 mm × P 340 mm (89" × 59" × 13.39")

xtension.3x3 H 2240 mm × L 2240 mm × P 340 mm (89" × 89" × 13.39")

xtension.3x4 H 2240 mm × L 2970 mm × P 340 mm (89" × 118" × 13.39")

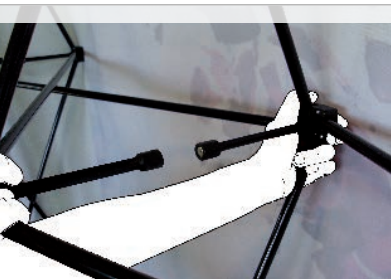
For customized configurations up to 16.4 ft, please contact us for more information



When to use the **xtension.** booth ?

xtension. is the ideal solution for events, store and shopping mall events, field sales people, trade shows and conventions.

The difference is in the details



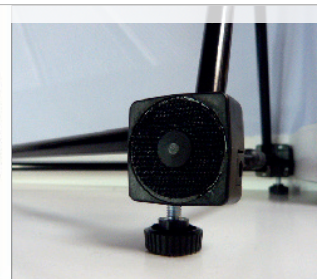
>Aluminum structure



>Magnetic connectors



>Velcro attachments

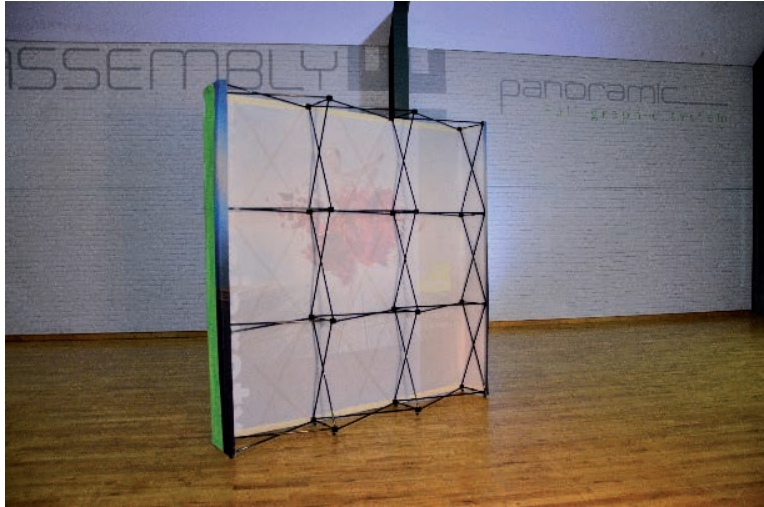


>Adjustable feet



>LED display lights

The lighter and easier to set up pop-up stand



Comparison between the **xtension.** stand and a conventional pop-up stand that uses magnetic bars and encapsulated paper graphics

| SEE THE DIFFERENCE: | xtension.3x3 | CONVENTIONAL POP-UP STAND |
|--|--|--|
| WEIGHT (with carrying case solution) | 8,3 Kg - 18.2 lbs | 30 Kg - 60 lbs |
| NUMBER OF PARTS | 1 (structure & attached graphic) | 12 (1 structure + 6 magnetic bars + 5 graphics) |
| INTERCHANGEABLE GRAPHIC | YES | YES |
| SET UP TIME | 30 secondes (pre-installed graphic) | 16 minutes |
| TRANSPORT COSTS (Example: Paris/Bordeaux by Chronopost) | 40€ | 96€ |
| TRANSPORT | Ultra Portable (Train, subway, etc...) | Portable (car...) |
| LONGEVITY | Excellent as it is less fragile (fabric graphic) | Average (encapsulated paper) |
| ECO-FRIENDLY | No lamination used, Imprim'vert-certified printing, aqueous ink base (98% water), graphics recyclable at end of life. Consumes less CO2 during transport Laminated graphics | 75% more energy consumed in addition to the fabric for the entire life cycle (EVA audit-consulting) |

xtension. shipping solutions

L Hard case
on wheels

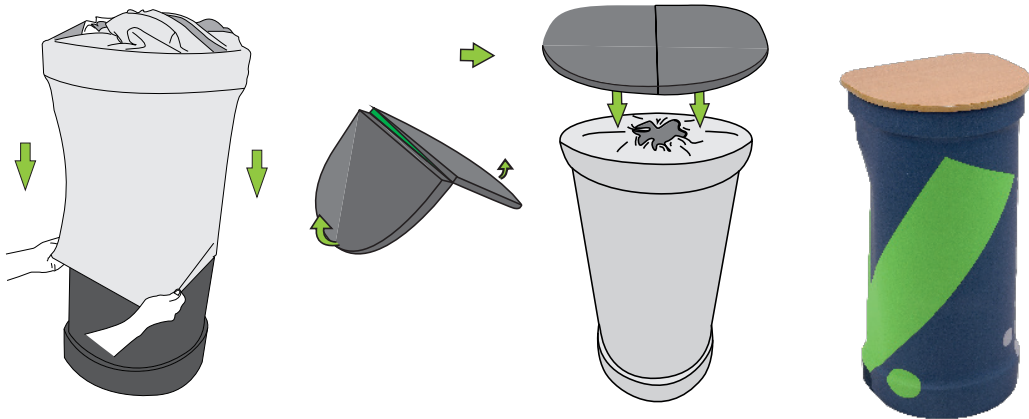
M Hard case
on wheels



a wide range of carry cases specially adapted for your needs is available.

Your **xtension.** products are protected thanks to durable, reinforced, soft or hard waterproof cases

Case-to-counter conversion



Counter 2 in 1

With a wood counter top, its transport bag and printed graphic wrap, your container transforms into a real counter.

xtension. Technical specifications

| | xtension.3x1 | xtension.3x2 | xtension.3x3 | xtension.3x4 |
|--|---|---------------------|---------------------|---------------------|
| Set-up | less than 30 seconds | | | |
| Height | Adjustable height / Standard height 2250 mm - 89" | | | |
| Width | 770 mm - 31" | 1510 mm - 59" | 2240 mm - 89" | 2970 mm - 118" |
| Total weight hardware + graphic + counter | 3,8 Kg - 8,4lbs | 5,6 Kg - 12,8lbs | 8,3 Kg - 18,3lbs | 9,1Kg- 20lbs |
| Materials | Frame: Aluminum and plastic injection Graphic: polyester with water-based dyes (no solvent). | | | |
| Transport bag | Hard cases M, L , transport bag and transport bag on wheels | | | |

displayfactory



promotion systems

displayfactory promotion systems

färberstr. 9

83022 rosenheim

telefon: + 49 (0) 80 31 / 38 00 28

telefax: + 49 (0) 80 31 / 17 665

e-mail: info@displayfactory.net